



dba DIRECT

DATA SHEET

ONguard 3.0™ dataALERT Monitor



You manage the business,
we manage the infrastructure.

A Real-Time Remote Monitoring and Management Tool

dataALERT is an advanced, web-enabled database console to remotely view the current state of the database environment, display critical alerts and report on data trends and analysis for Oracle and SQL-Server database environments.

Less is More

The idea behind dataALERT is simple – a monitoring tool must be a lite-agent, using very few resources to activate system alerts once a basic set of pre-defined thresholds is crossed.

The ONguard 3.0 dataALERT defines an intelligent automation process of:

- ◆ Assessing the severity of a database event
- ◆ Following a pre-defined notification path to alert dbaDIRECT
- ◆ Generating an actionable ticket, initiating the DBA research & remediation process

Our optimized team of DBAs uses the information from the dataALERT Monitor to research and resolve issues. Additionally, the DBA can use the console to view or generate reports to show the trending of the parameters over time. The ticket and resolution are available for viewing by customer in the ONguard clientDIRECT Portal.

dataALERT concentrates on the “key parameters” of the database environment that will indicate when additional actions are required.

dataALERT is part of a system that includes:

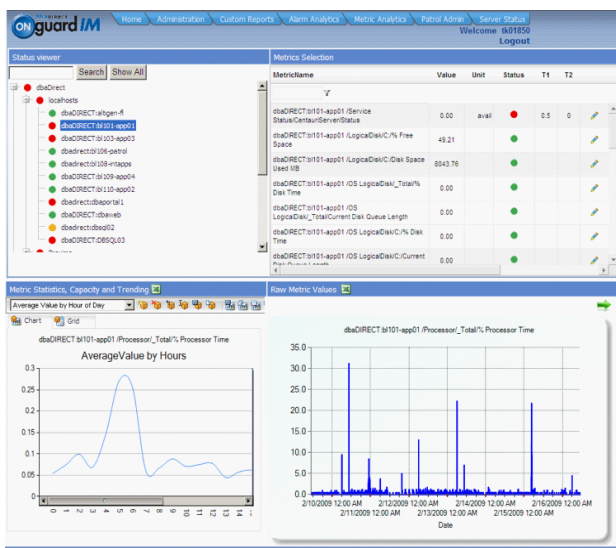
- ◆ smartFLOW Ticket Manager
- ◆ dataVIEW Dashboard
- ◆ clientDIRECT Portal
- ◆ smartSPEC SOP Library

dbaDIRECT® is the pioneer and leader in data infrastructure management services. Enterprise IT organizations turn to dbaDIRECT to gain significant increases in service, quality, consistency and coverage.

7310 Turfway Road Suite 300
Florence KY 41042
Toll Free | 877 687 3227
FAX | 859 283 7860
www.dbadirect.com

Key parameters include:

- ◆ Instance Availability
- ◆ Cache Utilization
- ◆ Space Utilization
- ◆ Backup Failures
- ◆ Log Errors
- ◆ Memory Utilization
- ◆ CPU Consumption
- ◆ Lock Conflicts



An Intelligent View of your Data Operations